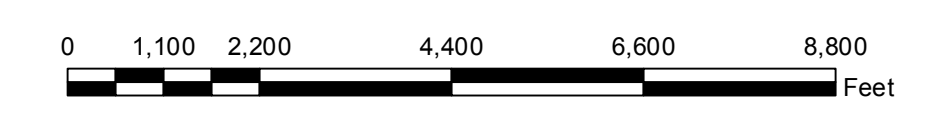


**City of Plano
Proposed
Growth & Change Map**

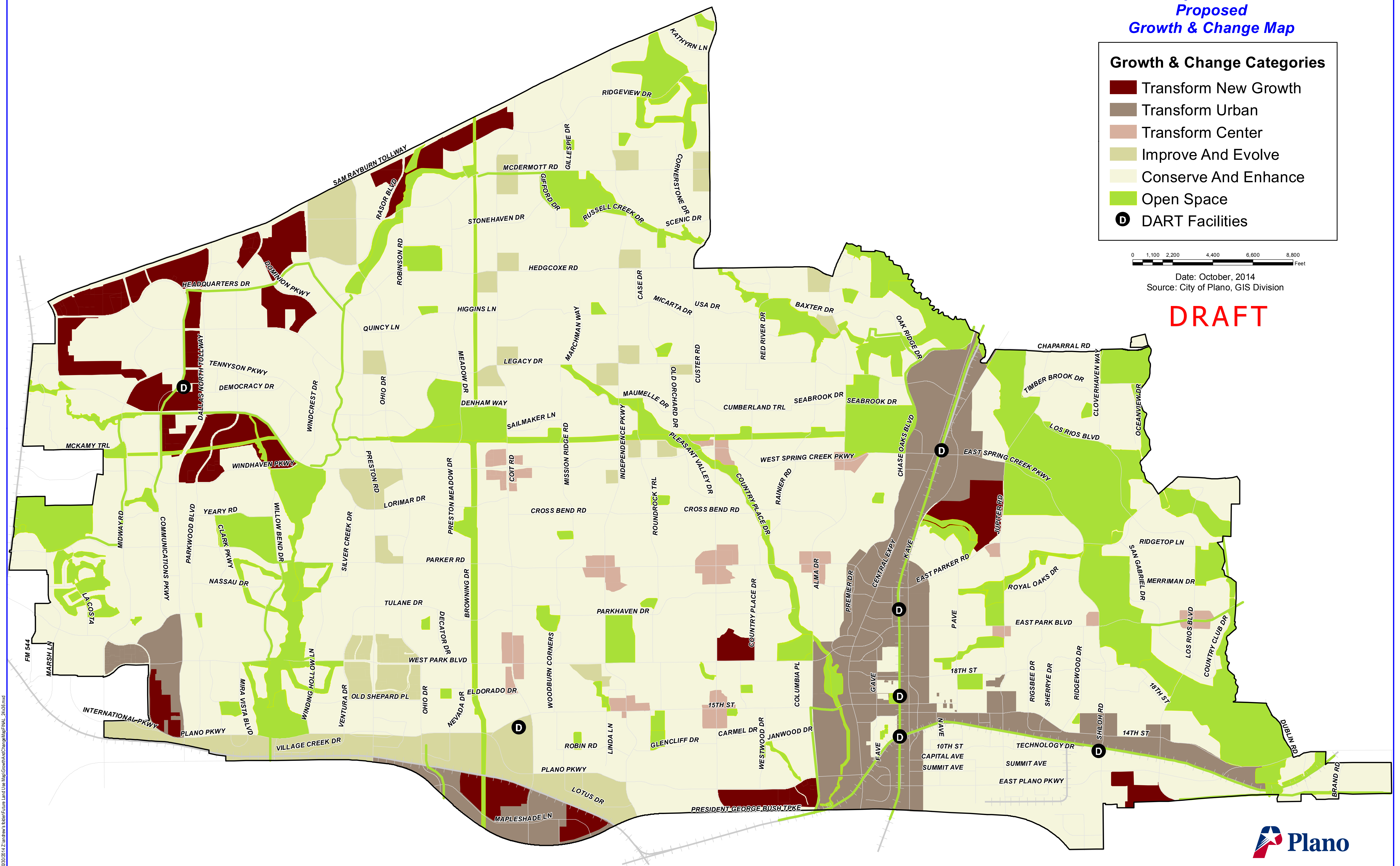
Growth & Change Categories

- Transform New Growth
- Transform Urban
- Transform Center
- Improve And Evolve
- Conserve And Enhance
- Open Space
- D DART Facilities



Date: October, 2014
Source: City of Plano, GIS Division

DRAFT



Staff: 10/30/2014 2:12:47 PM Andrew's 8/16/14 Future Land Use Map Growth and Change Map Final - 2x3.65.mxd



PROPOSED GROWTH AND CHANGE MAP CATEGORIES

Open Space: These areas are expected to remain in open space uses such as nature preserves, parks, linear trails, and regional recreation.

Conserve and Enhance: These areas are expected to retain the current form of development, but will experience some minor infill and reuse consistent with the present form and character.

Improve and Evolve: These areas are expected to experience moderate changes through infill, reuse, and redevelopment.

Transform Center: These existing areas are expected to experience significant redevelopment and transformation into mixed-use pedestrian-friendly centers.

Transform Urban: These existing areas are expected to experience extensive large-scale change and urbanization through major redevelopment projects.

Transform New Growth: These existing undeveloped areas (>50 acres) are expected to experience dramatic change through new large scale development projects.